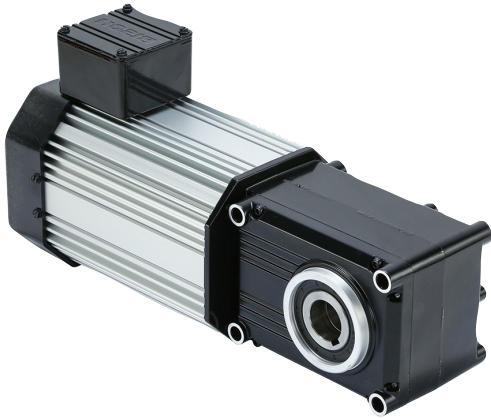


Maximum Efficiency Right-angle Gearmotors

730 230/400-460V 50/60Hz Inverter Duty (2-stage)



The heavy duty PowerSTAR® 730 Series 2-Stage 230/400-460V right-angle inverter duty gearmotor offers up to 982 in-lbs of torque running continuously for reliable and energy efficient operation.

730 Series 230/400-460V Inverter Duty Ratios 10:1 to 60:1 -TEFC*

Part Number	Speed (RPM)				Rated Torque (in-lbs)				Input HP	Gear Ratio	OHL (lbs)	Rated Current 230V (Amps)				Rated Current 460V (Amps)			
	6Hz	50Hz*	60Hz	90Hz	6Hz	50Hz*	60Hz	90Hz				6Hz	50Hz	60Hz	90Hz	6Hz	50Hz*	60Hz	90Hz
027-730K0010T	16	132	160	240	168	168	168	112	1/2	10	465	1.94	2.44	1.94	1.59	0.94	0.98	0.94	0.77
027-730K0015T	11	89	108	162	239	239	239	159	1/2	15	520	1.94	2.44	1.94	1.59	0.94	0.98	0.94	0.77
027-730K0020T	8	66	80	120	327	327	327	218	1/2	20	565	1.94	2.44	1.94	1.59	0.94	0.98	0.94	0.77
027-730K0030T	5.3	44	53	80	487	487	487	324	1/2	30	625	1.94	2.44	1.94	1.59	0.94	0.98	0.94	0.77
027-730K0040T	4	33	40	60	655	655	655	436	1/2	40	675	1.94	2.44	1.94	1.59	0.94	0.98	0.94	0.77
027-730K0050T	3.2	26	31	48	814	814	814	542	1/2	50	720	1.94	2.44	1.94	1.59	0.94	0.98	0.94	0.77
027-730K0060T	2.7	22	27	41	982	982	982	654	1/2	60	760	1.94	2.44	1.94	1.59	0.94	0.98	0.94	0.90

See accessories on page 17

*50Hz data rated at 400V

